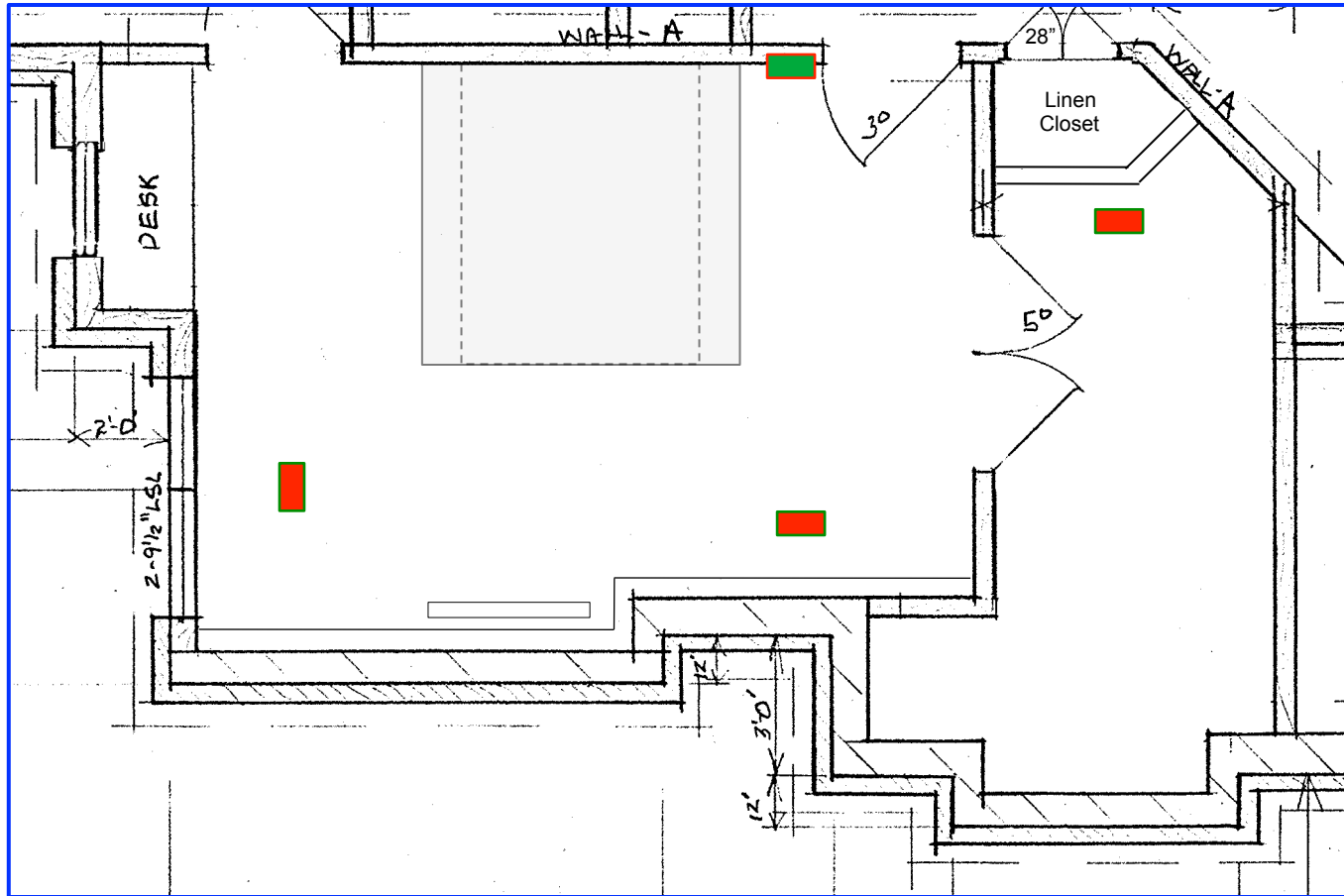



Floor Plan

Scale: 4' per inch

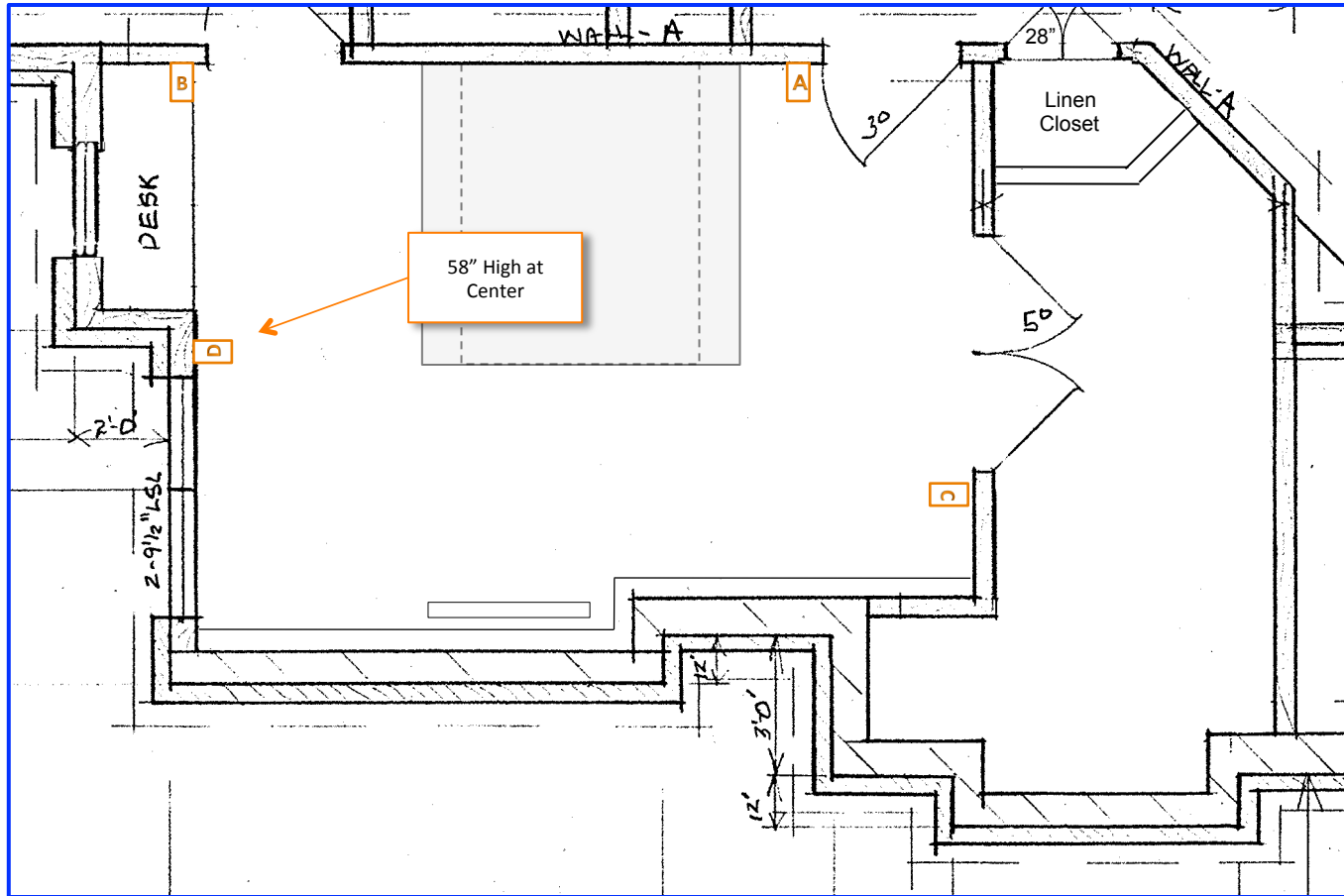


HVAC Duct Locations

 = Supply Air Duct

 = Return Air Duct

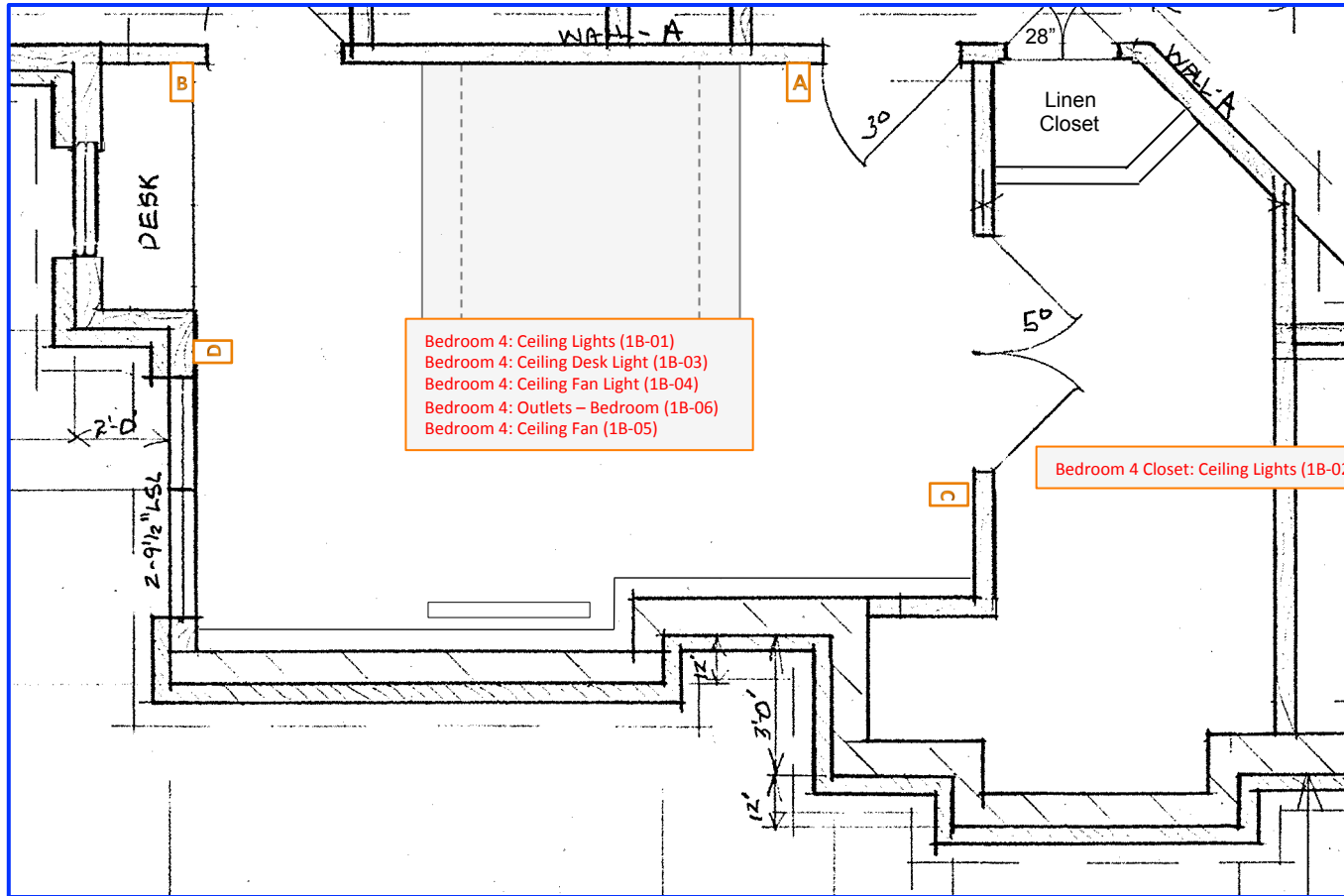
Scale: 4' per inch



Lighting Controls

X = Switch Cluster

Scale: 4' per inch



Lighting Control Circuits

X = Switch Cluster

Scale: 4' per inch

1B - Bedroom 4

Lighting Keypads 1

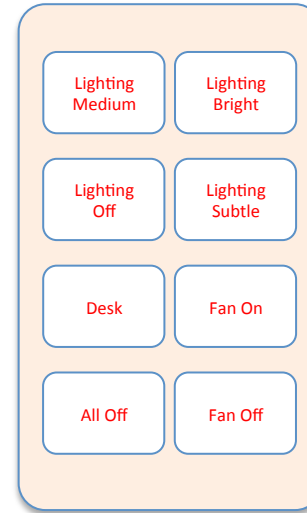
Keypad Location 1B-A Bedroom 4, Left of Hall Door



Bedroom 4: Ceiling Lights (1B-01)
 Bedroom 4: Ceiling Desk Light (1B-03)
 Bedroom 4: Ceiling Fan Light (1B-04)
 Bedroom 4: Outlets – Bedroom (1B-06)
 Bedroom 4: Ceiling Fan (1B-05)

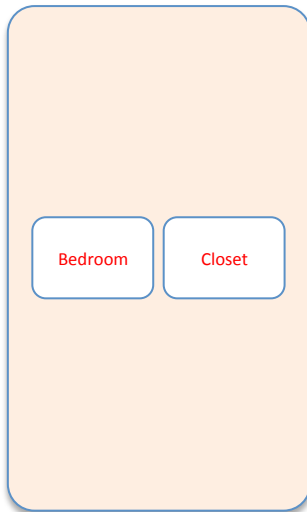
Cables
2 - Red

Keypad Location 1B-B Bedroom 4, Left of Bath Door



Cables
2 - Red

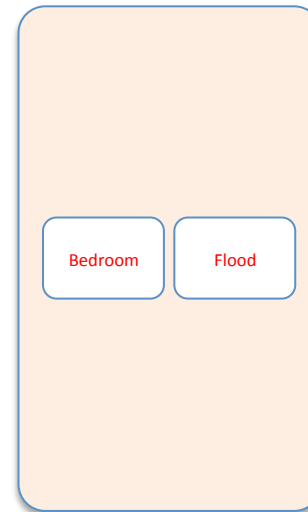
Keypad Location 1B-C Bedroom 4, Right of Closet Door



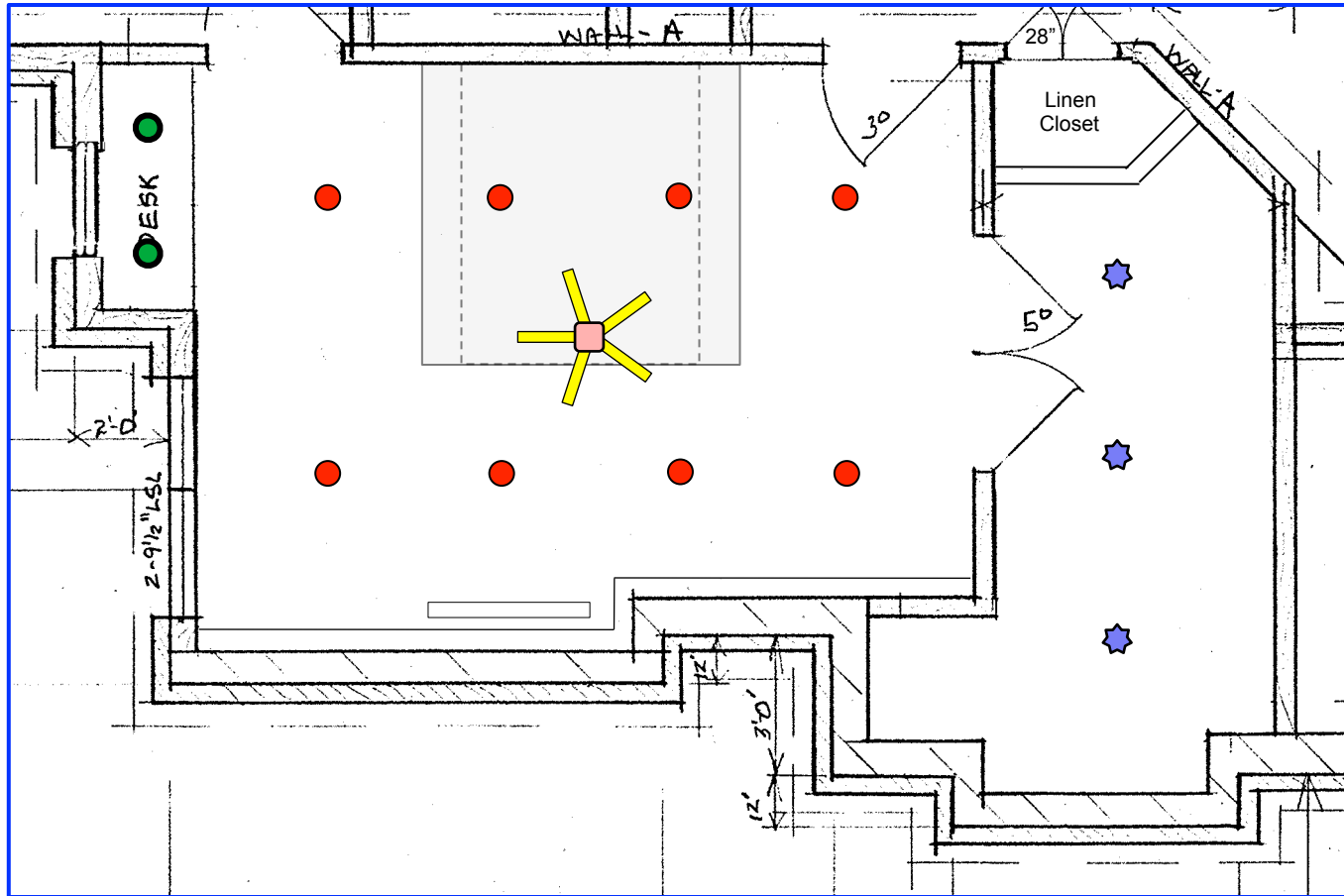
Bedroom 4 Closet: Ceiling Lights (1B-02)

Cables
1 - Red

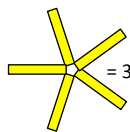
Keypad Location 1B-D Bedroom 5, Right of South Window



Cables
1 - Red



Lighting Fixtures



= 36" Ceiling Fan



= 6" LED Recessed (1B-01)



= 4" LED Recessed (1B-04)

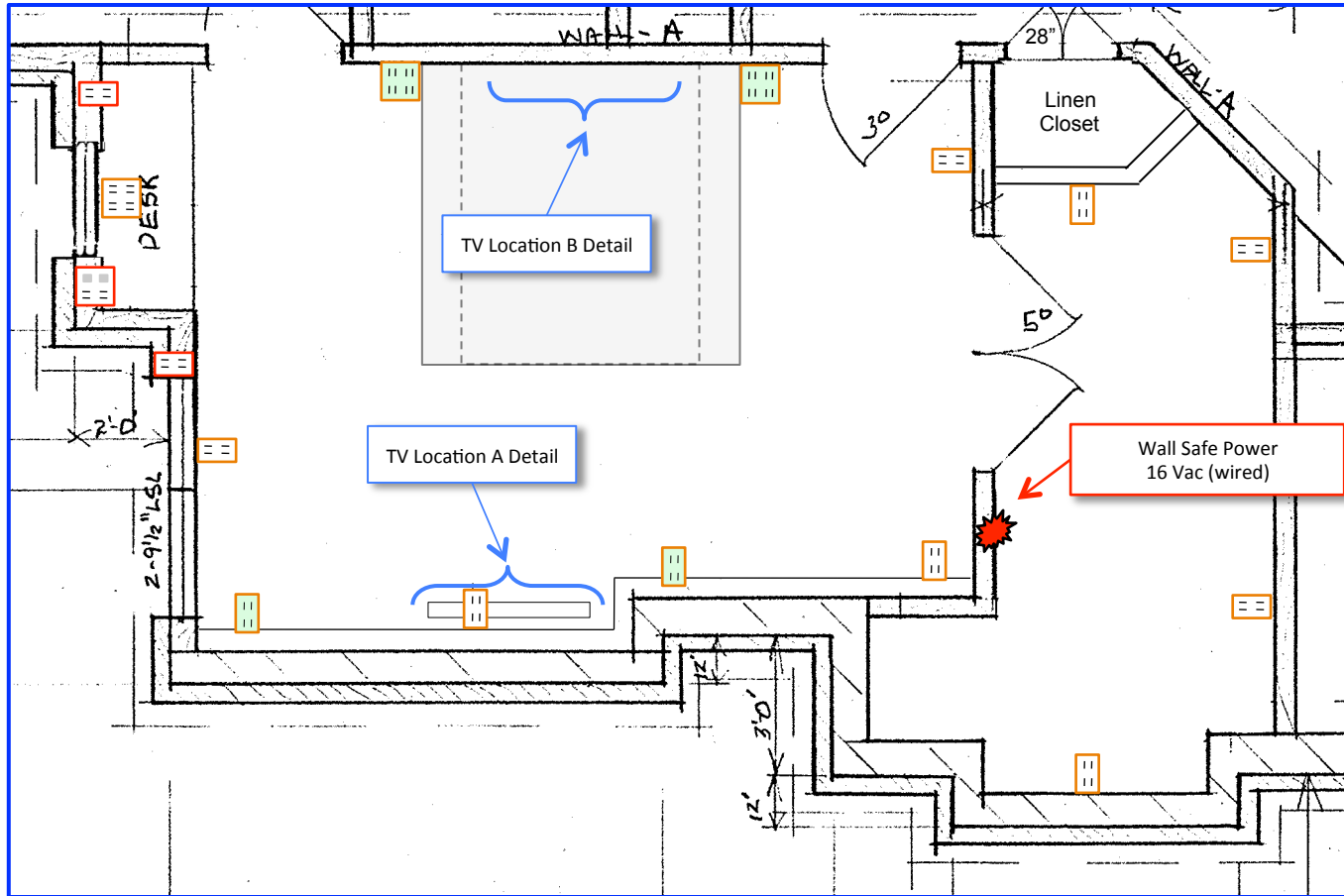


= Fan Light













= Surface Fixture (1B-02)

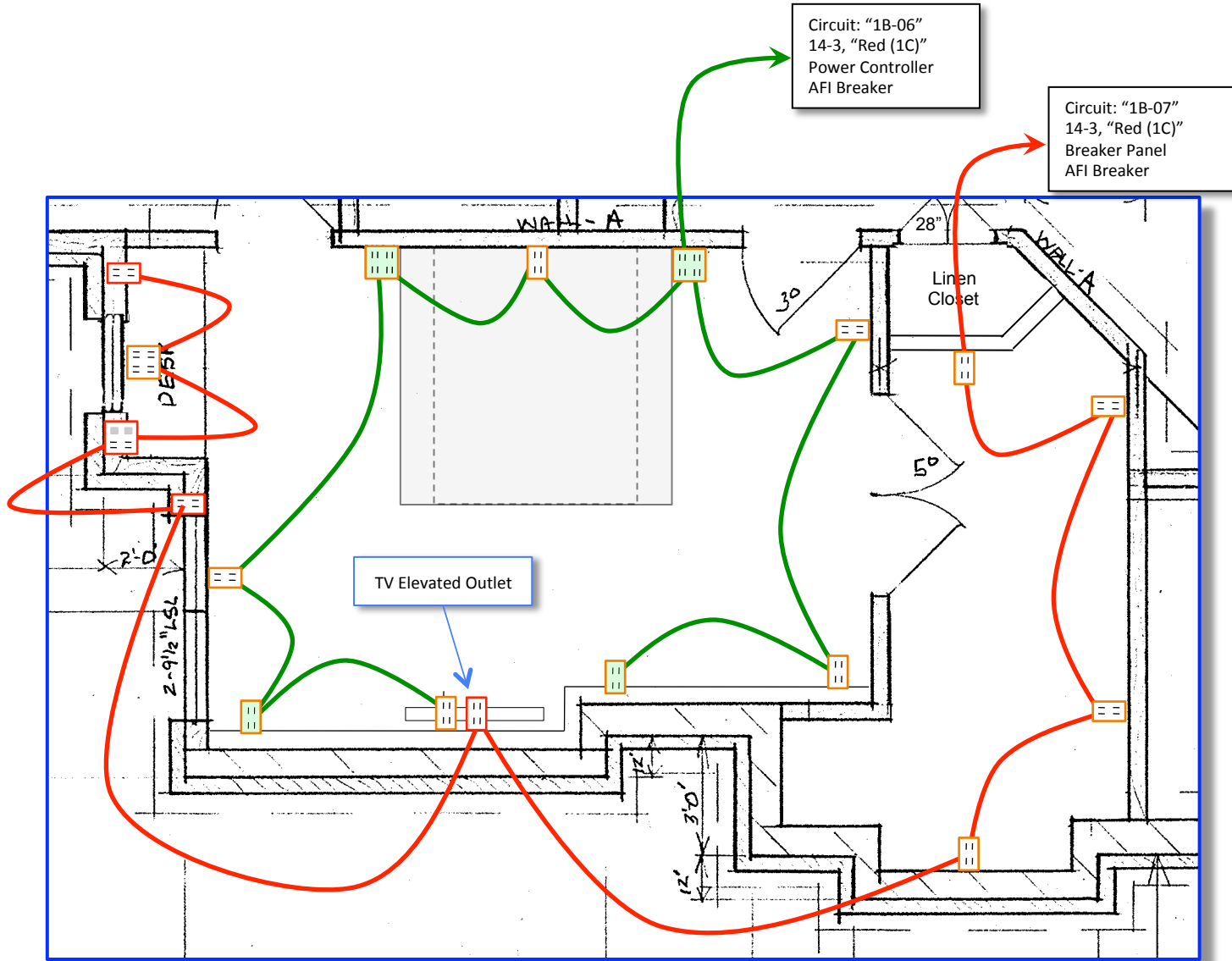
Scale: 4' per inch













Power

-  = 15A Duplex
-  = 15A Duplex (1/2 Switched)
-  = 15A Duplex / LAN / Phone
-  = 15A Duplex (Concealed)
-  = 15A Quad (1/4 Switched) / LAN / Phone
-  = 15A Quad
-  = 15A Quad (1/2 Switched)
-  = 15A Duplex / LAN / Phone (1/2 Switched)
-  = 15A Duplex (High)
-  = 15A Duplex / LAN / Phone (High)

Scale: 4' per inch



Power Wiring

-  = 15A Duplex
-  = 15A Duplex (1/2 Switched)
-  = 15A Duplex / LAN / Phone
-  = 15A Duplex (Concealed)
-  = 15A Quad (1/4 Switched) / LAN / Phone
-  = 15A Quad
-  = 15A Quad (1/4 Switched)
-  = 15A Duplex / LAN / Phone (1/2 Switched)
-  = 15A Duplex (High)
-  = 15A Duplex / LAN / Phone (High)

Scale: 4' per inch

BR 4 Desk: Window Sash
1 NC Reed Switch
Circuit: 1B-S01

BR 4 Desk: Window Intrusion
Circuit: 1B-S11

Cable: 1B-S01/11
"Red/CN-Panel", 22-4

BR 4: Bathroom Door
1 NC Reed Switch
Circuit: 1B-S02, Cable: 1B-S02
"Red/CN-Panel", 22-2

BR 4: Door
Circuit: 1B-S03, Cable: 1B-S03
Note: "Keypad (1B)", 22-2

BR 4: Smoke Detector
(8' Ht @ Center)
Circuit: 1B-S04

BR 4: CO Detector
(7' ht @ center)
Circuit: 1B-S05

Cable: 1B-S04/05
"Red/CN-Panel/1", 22-6

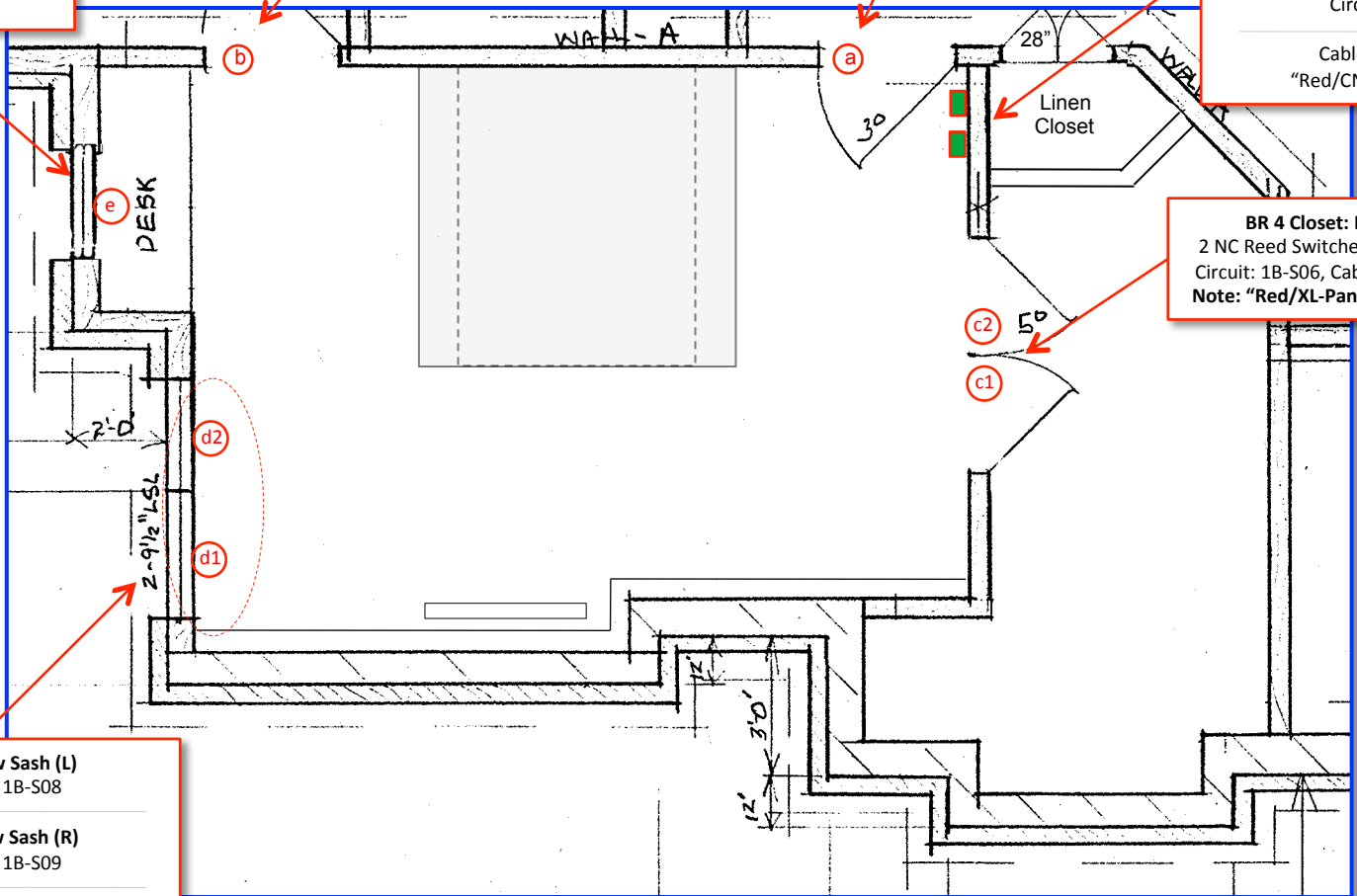
BR 4 Closet: Door
2 NC Reed Switches In Series
Circuit: 1B-S06, Cable: 1B-S06
Note: "Red/XL-Panel/1", 22-8

BR 4: Window Sash (L)
(d1) Circuit: 1B-S08

BR 4: Window Sash (R)
(d2) Circuit: 1B-S09

BR 4: Window Intrusion
Circuit: 1B-S10

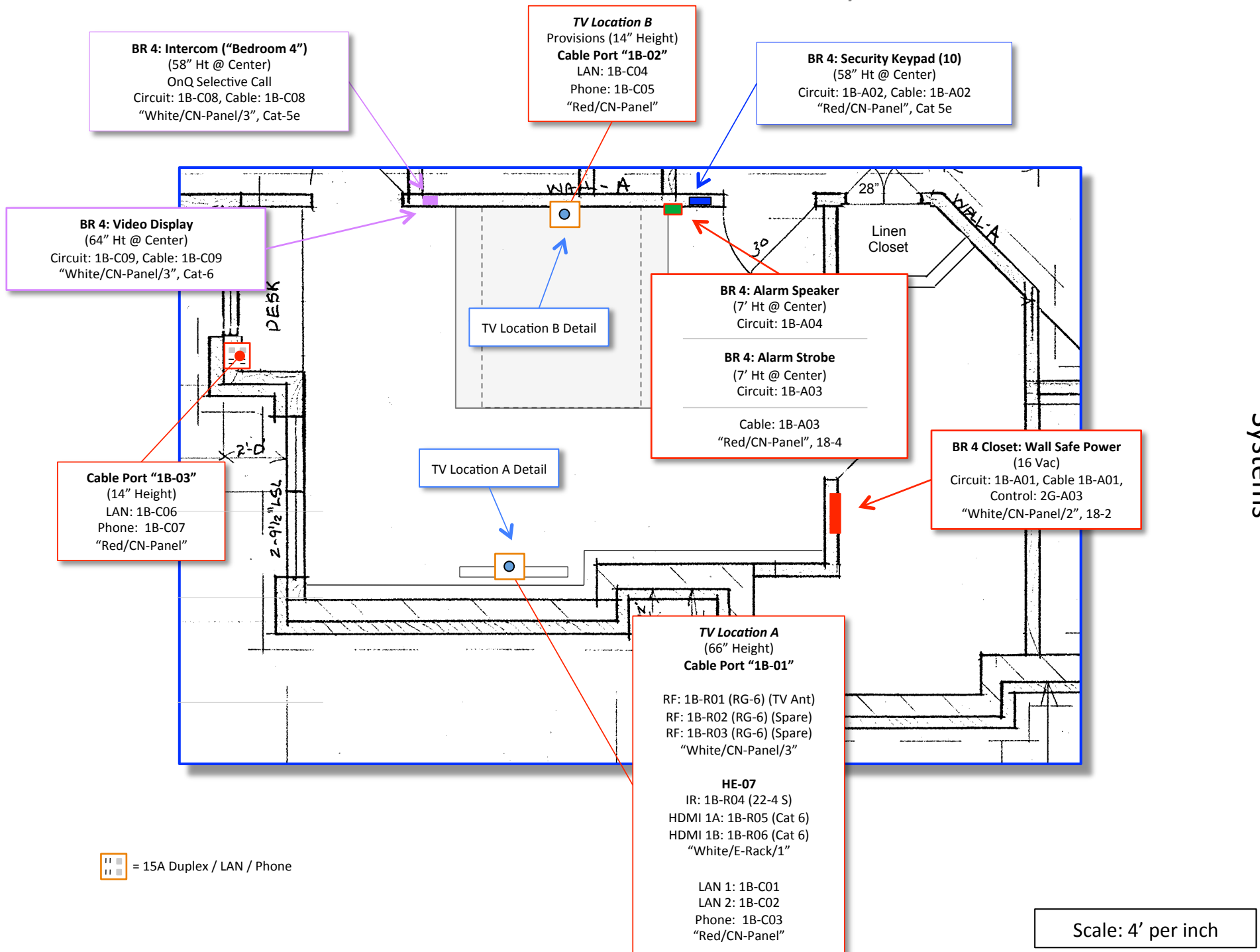
Each Window: 1 NC Reed Switch
Cable: 1B-S08>10
"Red/CN-Panel", 22-8



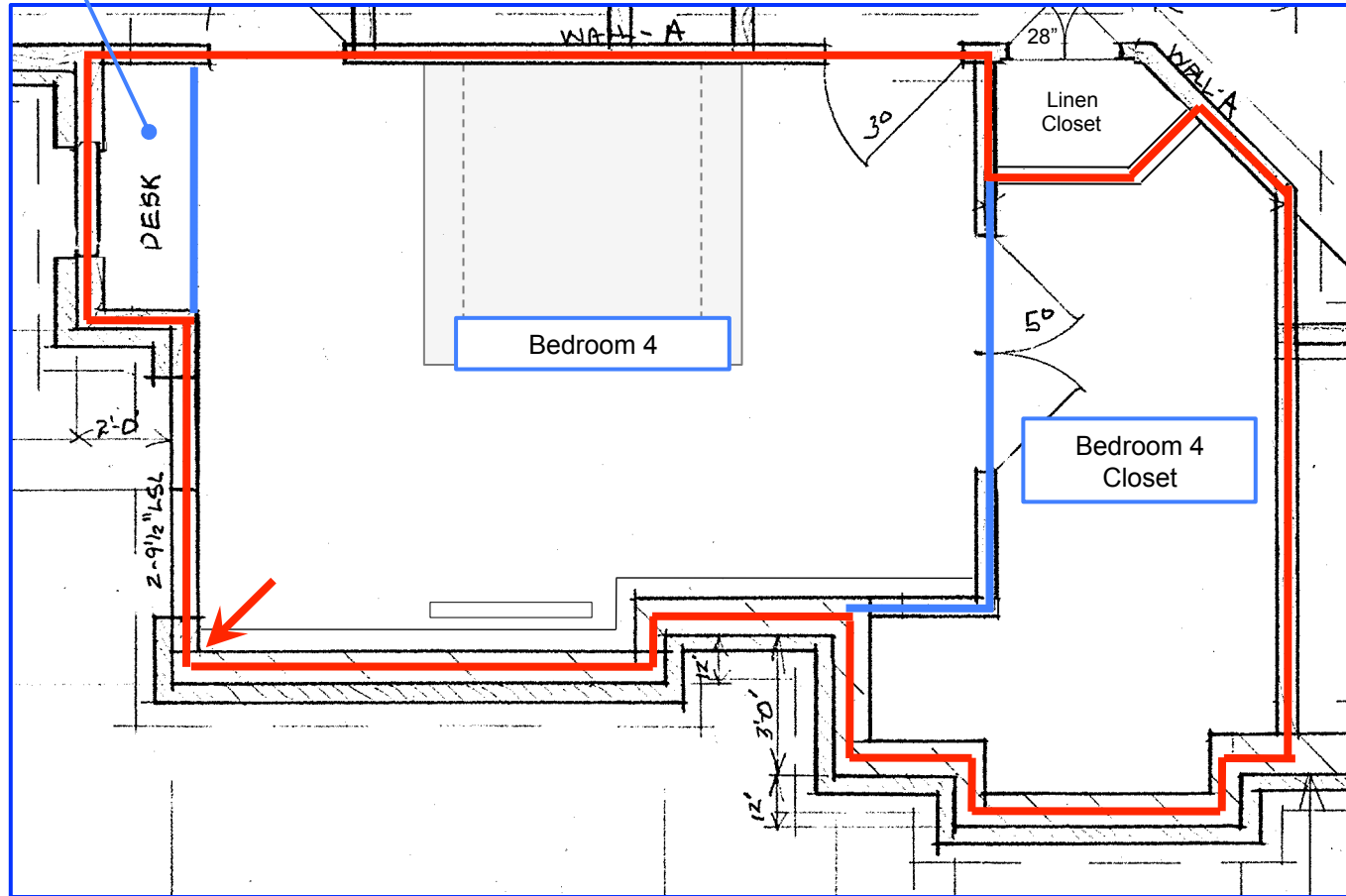
(x) = NC Door/Window Sensor
(Concealed Reed)

Scale: 4' per inch

Sensors




Bedroom 4 Desk

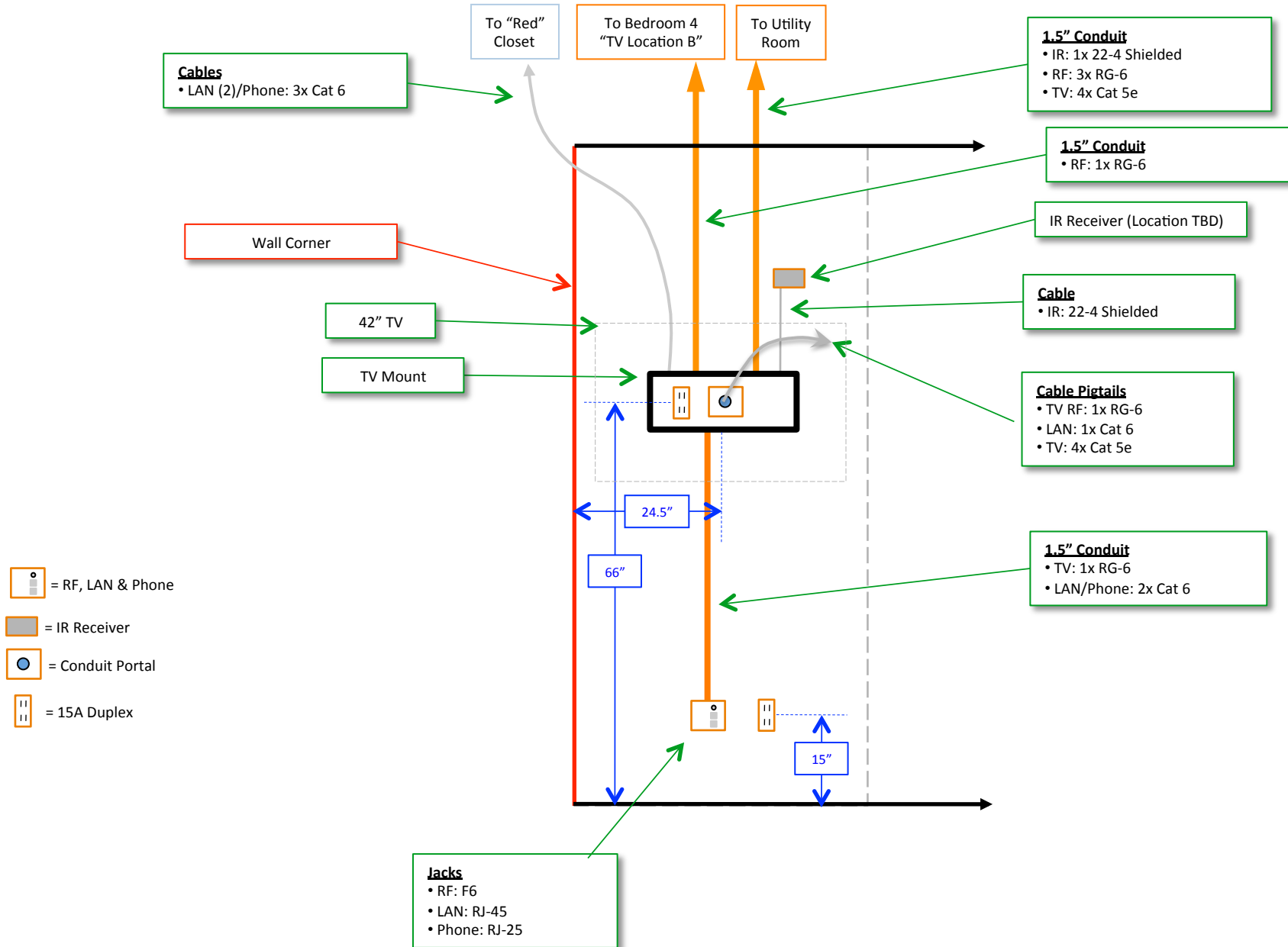


Region Overview

 = Region Boundary

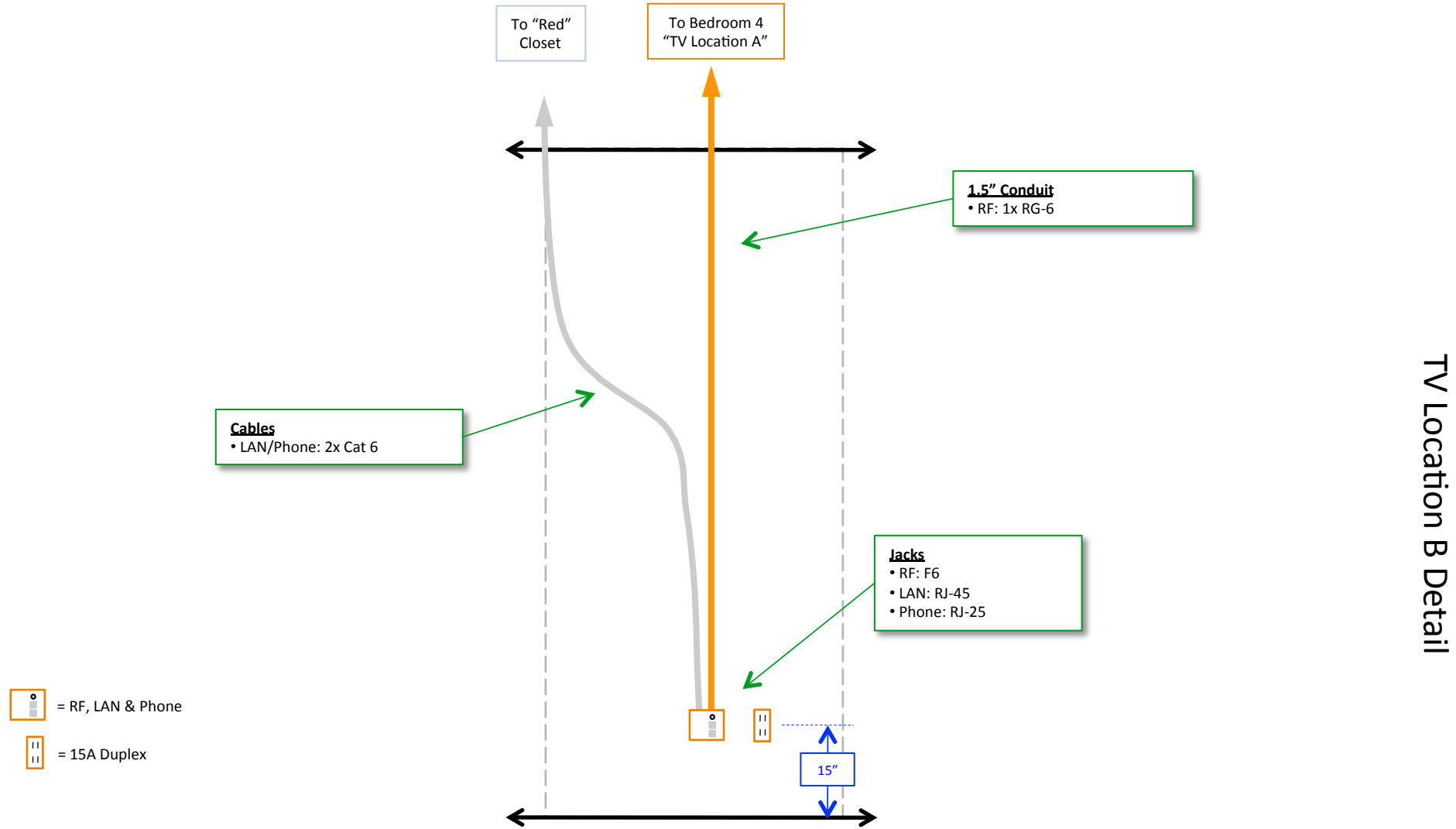
 = Region Anchor Point (Corner)

Scale: 4' per inch



TV Location A Detail

Scale: 2' per inch



TV Location B Detail

Scale: 2' per inch